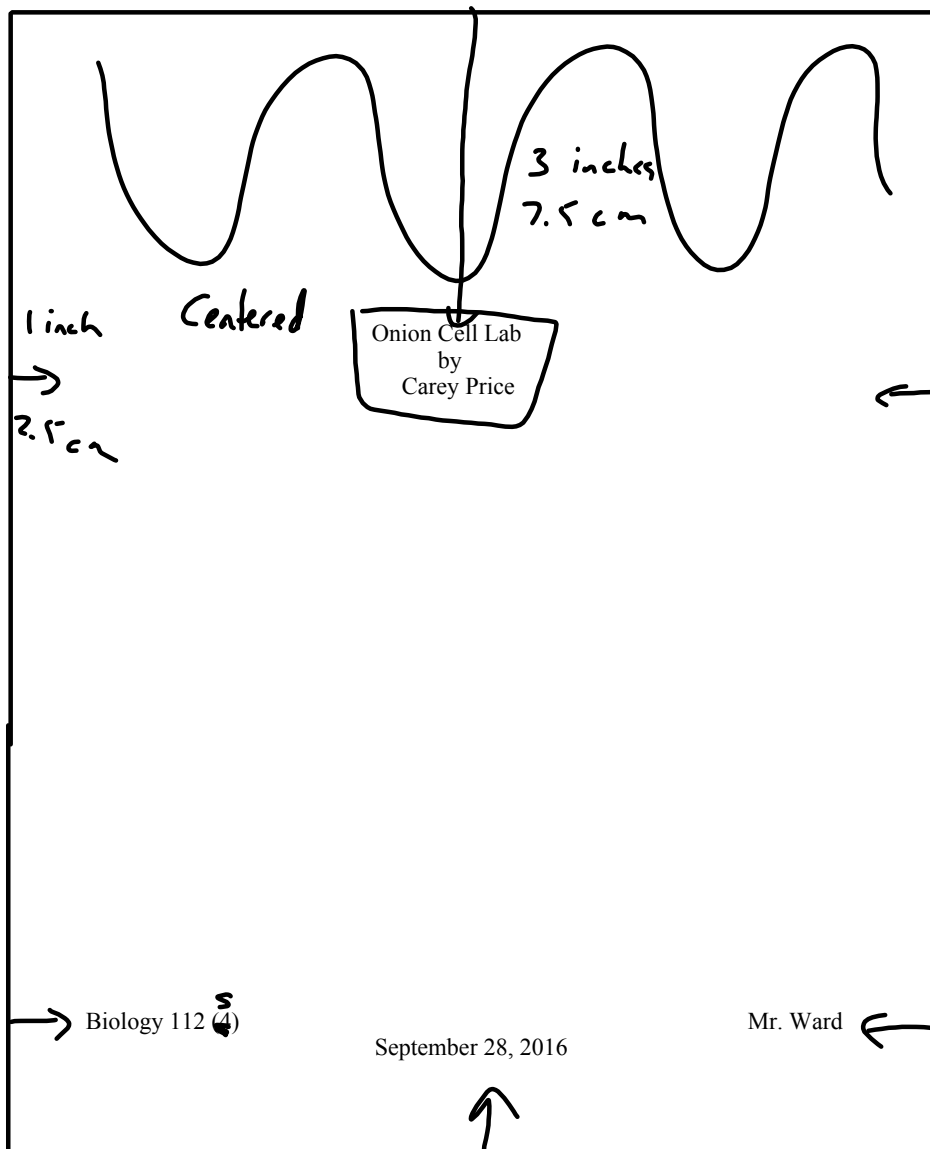


# Lab Report

## 1. Title Page

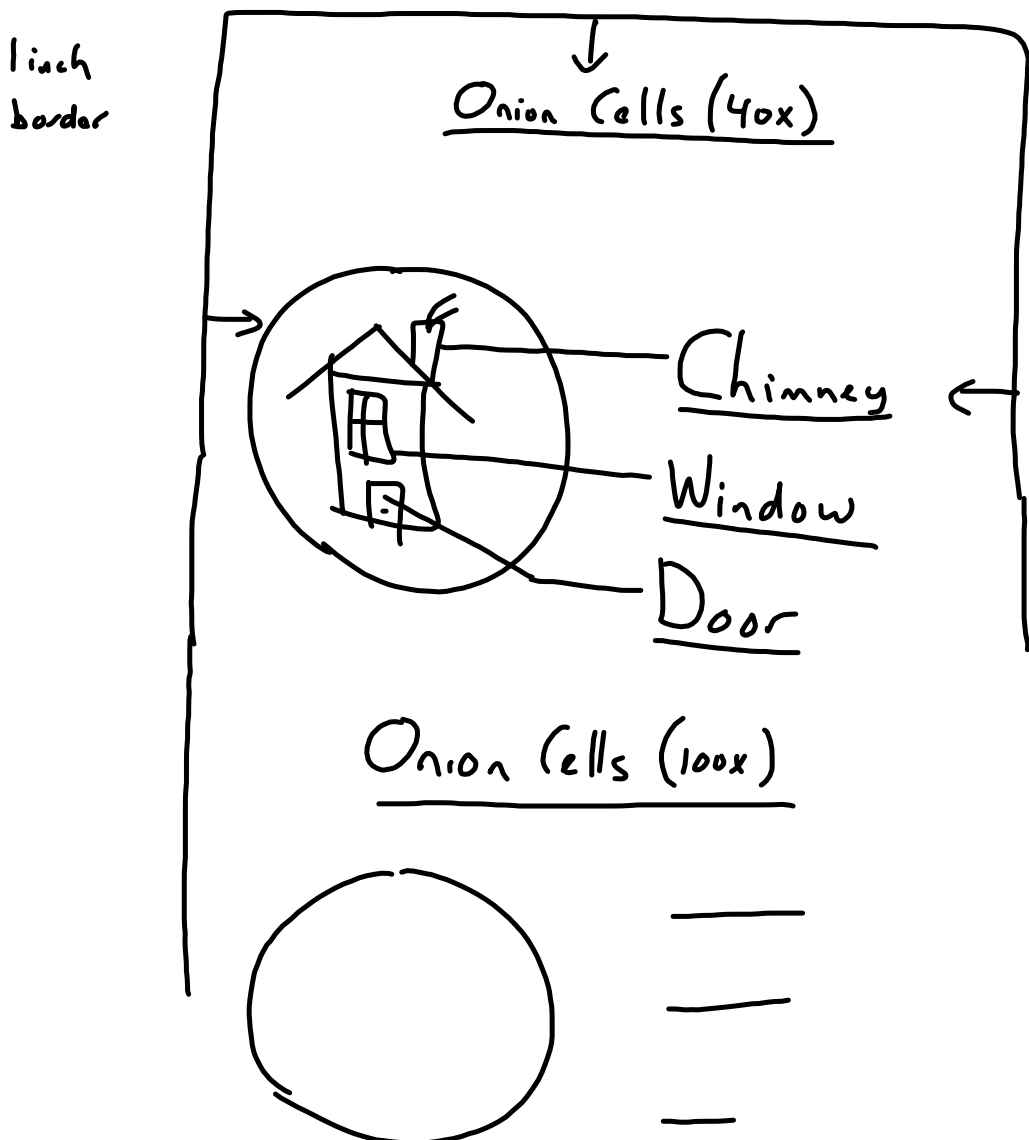
Plain unlined paper

Use computer 12 or 14 font  
or write/print in black or blue ink

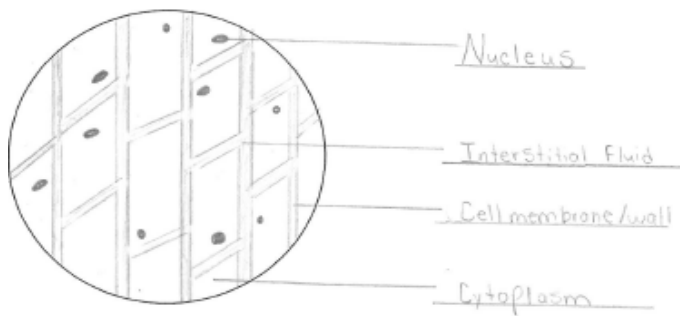


## Diagrams

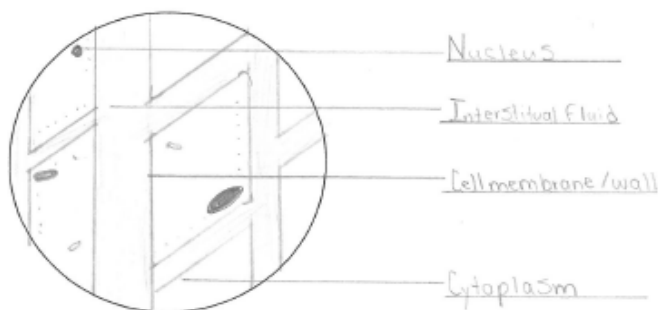
- plain unlined paper
- pencil only \* (use may use your computer to draw the circle for this lab)
- title for each diagram
- labels on the right, underlined
- labels are to lined up underneath one another
- use a RULER



Onion Cell (40x)



Onion Cell (400x)



## Questions :

Answer in full sentence form...must be able to stand on its own.

There are no, yes or no answers.

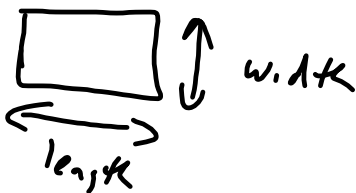
If part of the question is placed in the answer it allows the answer to stand on its own.

~~Ex.~~ What is the effect of iodine on onion cells?

When iodine was added to the onion cells the following effect was observed, .....

## Cell Length and Width Calculations:

1. Show work in pencil.



① Show me the high power field of view calculation

② Use the answer from 1 to calculate the length of 1 cell & the width of 1 cell

$$\frac{\text{Fov}}{\text{\# cells}}$$